

## Zenith Z-1 Model II Battery Instructions

### Handling

Your battery label is printed on Epson Ultra Premium Presentation Matte paper, which is normally used for fine art prints displayed behind glass. The surface is easily scratched and moisture will damage the image. Handle it gently and avoid excessive handling and moisture. For increased protection, we recommend spraying the label with a clear acrylic spray designed for photographs or inkjet prints, such as **Krylon Preserve It!** available at art supply stores. Your Z-1 battery to the **OEM** connector on all 600 series and 8G005 Trans-Oceanics. On the 600 series, the Z-1 powers the dial light circuit. On 8G005 series, the Z-1 connects in series with the A+ battery lead to provide additional power to run the extra tube filaments found in the 8G005 series. An 8G005 series radio will not operate unless a 1.5v battery is connected to the small connector.

### Installation

1. Install a fresh C cell in the Z-1. See instructions on next page. Insert the connector into the battery, observing proper orientation of the pins. Note that one pin is larger than the other. The large hole is the positive (+) terminal; the small hole is the negative (-) terminal. Insert the connector far enough to make good contact. It does not have to be flush with the top of the battery.
2. If your radio has a holder for the Z-1 battery, ease the battery into the holder, being careful not to scratch or damage the label. On 600 series radios, test to see that the dial light works. On 8G005 radios, if it plays, the installation is successful. If the Z-1 is not providing power, see below.

### Trouble Shooting

If the dial light does not work, or your 8G005 does not play with the Z-1 installed, test the battery with a VOM or DVM and make sure there is voltage at the contacts. There should be about 1.6 volts with a fresh C cell. If the battery is providing less than 1.4 volts, replace the battery. If there is no current with a fresh C cell installed, check your C cell installation. The most common problem is a misrouted negative wire. The black wire must be in the groove inside the battery body so that the C cell can move freely inside the tube and be pushed against the positive contact by the negative spring contact. Make sure that the black wire is wrapped around the base of the spring contact, and not blocking contact between the spring and the bottom of the C cell.

If you have current at the terminals, make sure your radio's connector is making contact with the battery terminals. You may need to clean the pins on the connector plug.

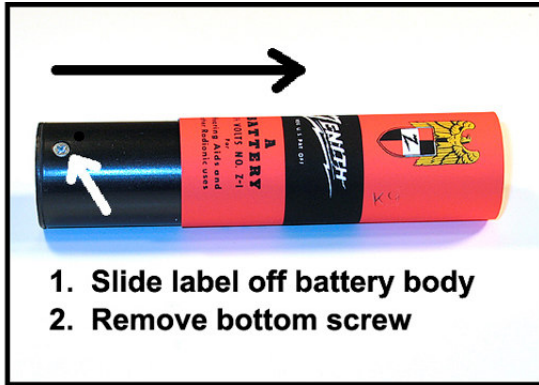
**600 Series:** Check the bulb in your 600 series radio. If the dial light bulb is burned out, a replacement bulb can be obtained at Radio Shack #272-1124.

**8G005 Series:** Make sure your primary A-B battery is supplying the proper voltage to the radio. Note that the C cell in the Z-1 will need replacement more often than higher capacity cells in your primary battery or power supply.

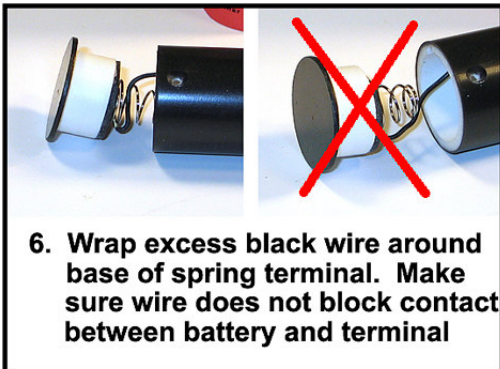
### Warranty

If your battery fails to work, return it for free repair or replacement. The C cell is not covered under this warranty. For service or to order replica battery boxes, labels, and connectors: Visit our website at [www.edsantiqueradios.com](http://www.edsantiqueradios.com).

Installing and Replacing the C cell in your Z-1



Use a premium quality alkaline C cell for best voltage, longest life, and less chance of leakage. Use of rechargeable cells is not recommended.



If your battery does not work, see Troubleshooting tips on the previous page. Most often, the problem is incorrect installation of the C cell. Either the battery is not sliding freely in the tube so it can contact the positive terminal or the black wire is blocking contact between the spring and bottom of the C cell.